

own as Santa Maria del Fiore (St. Mary of Flowers) and the Duomo (the Dome), started in
completed in 1436 by Filippo Brunelleschi



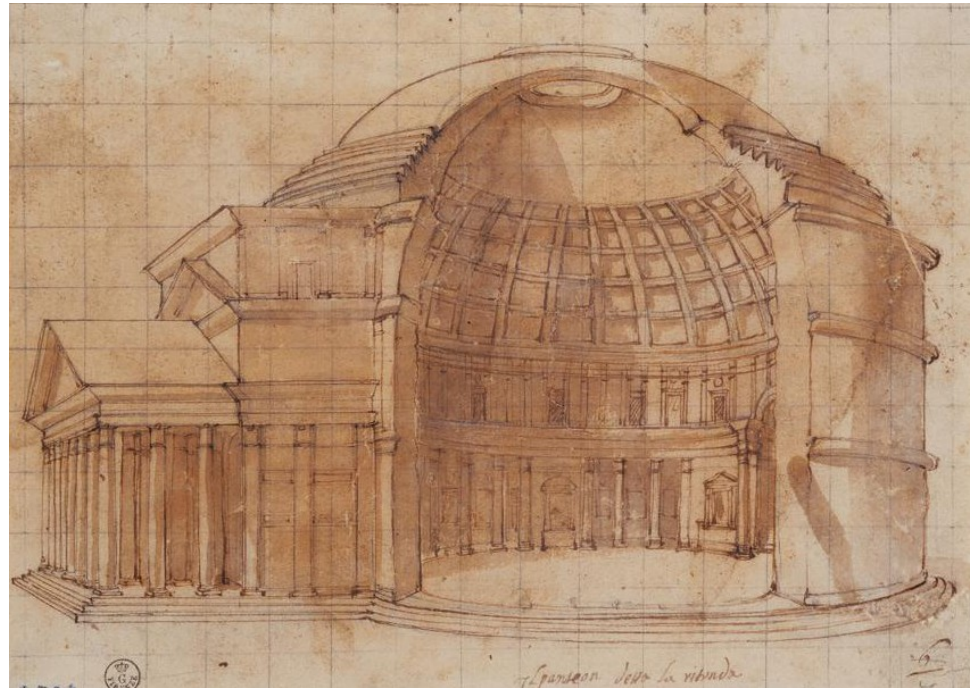


The Pantheon, Rome
built 125 AD



Section of the Duomo (left), which spans 140 ft (45 m)

The Pantheon (right), which spans 142 ft (43.3 m)



of the dome



tern,
spicatum

ed
to the vertical ribs of the dome

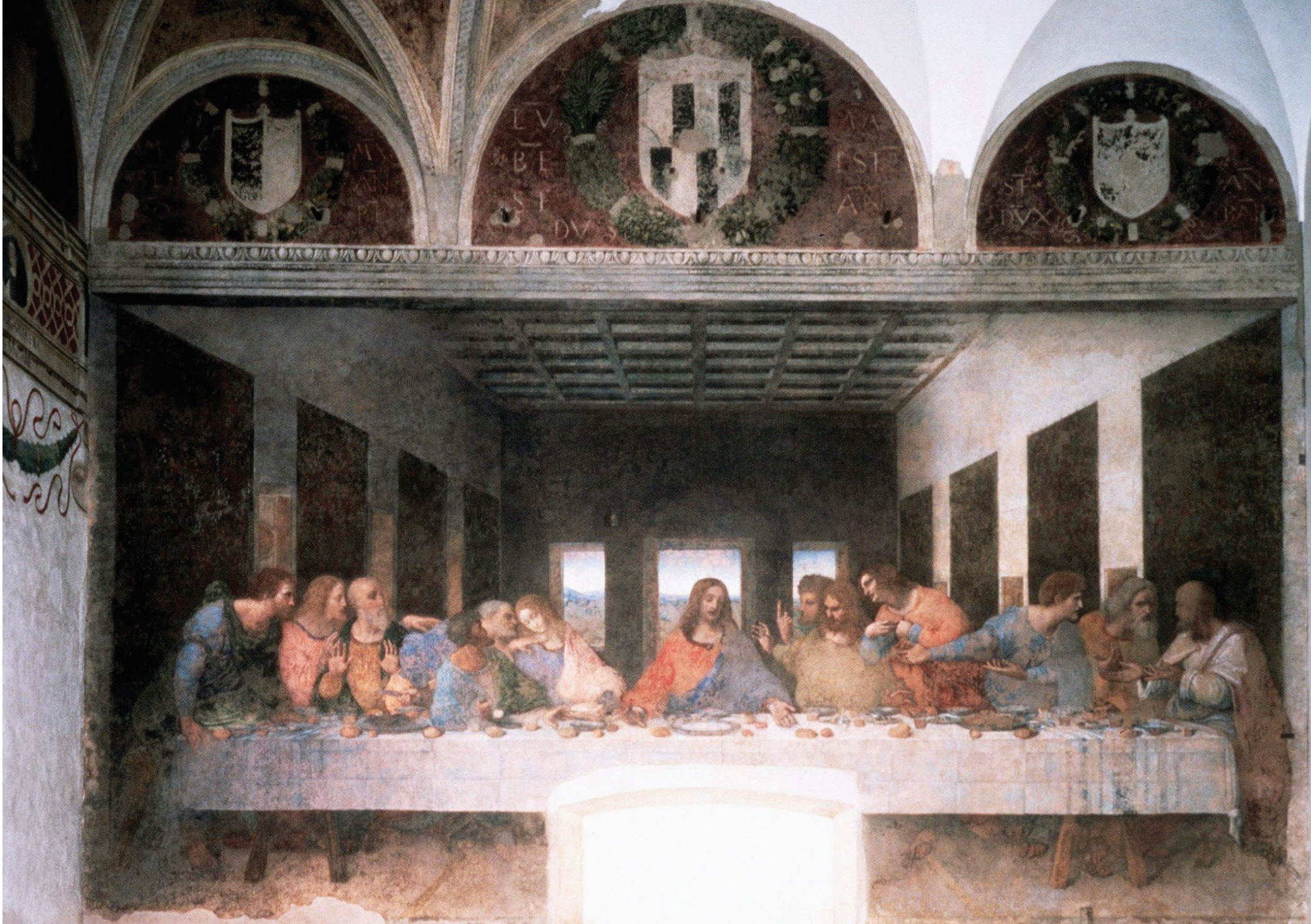


The Lantern



Donatello, David, 1440s





| LEONARDO DA VINCI, Last Supper, ca. 1495-1498. Oil and tempera on plaster, 13' 9" x 29' 10". Refectory, Santa Maria delle Grazie, Milan.



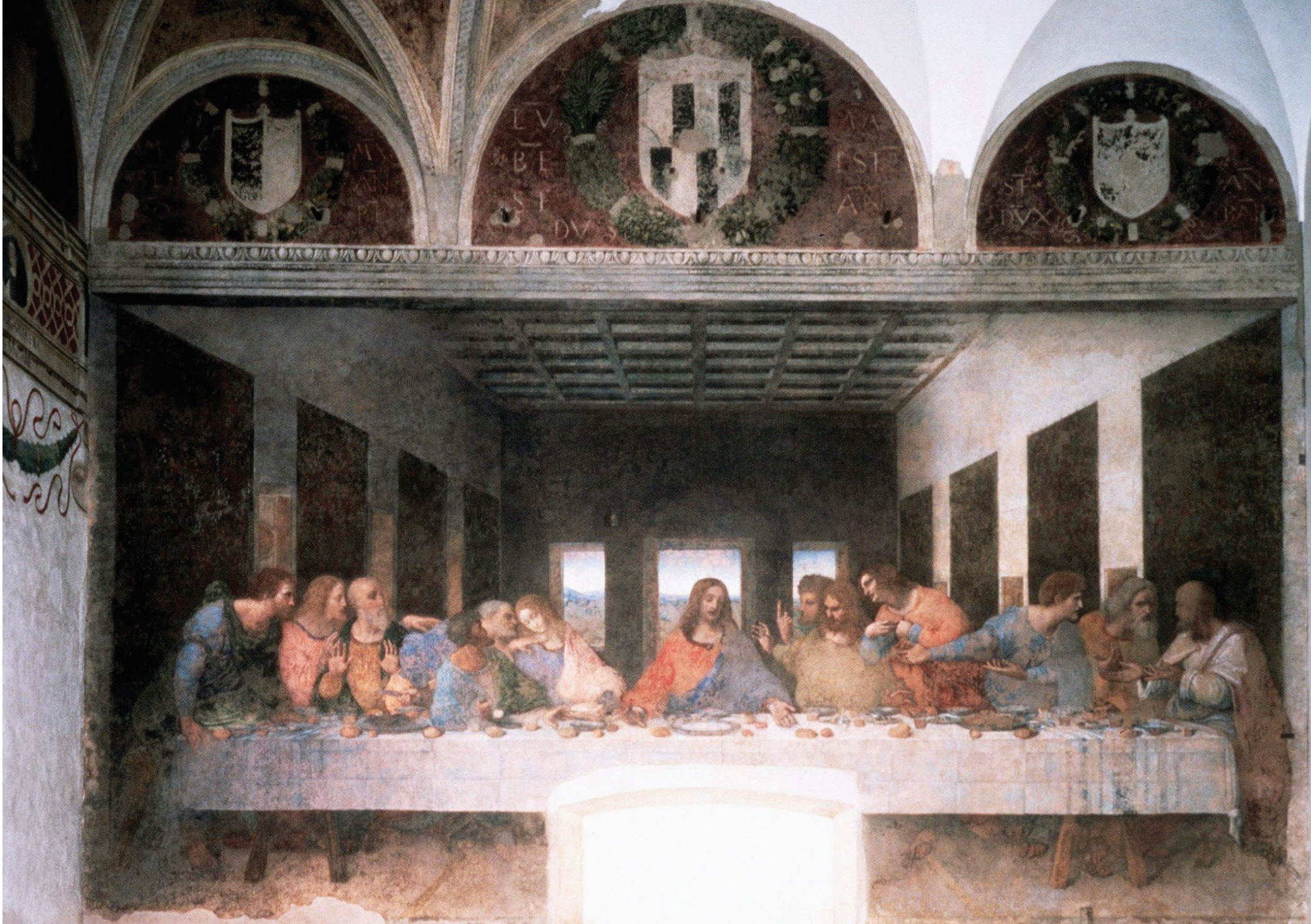






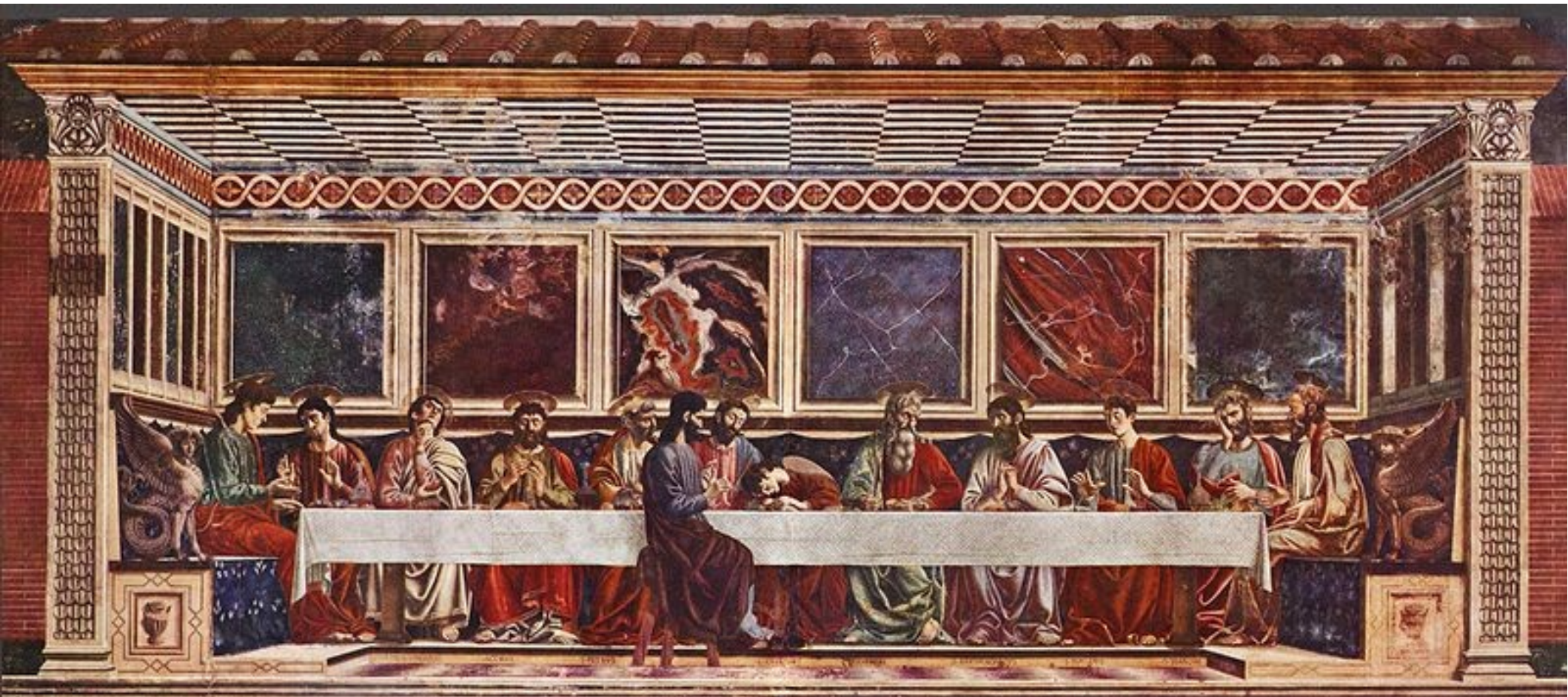






▣ LEONARDO DA VINCI, Last Supper, ca. 1495–1498. Oil and tempera on plaster, 13' 9" x 29' 10". Refectory, Santa Maria delle Grazie, Milan.

I Last Supper by Andrea del Castagno, painted 1447



| MICHELANGELO
BUONARROTI, *Pieta*,
ca. 1498-1500. Marble,
5' 8 ½" high. Saint
Peter's, Vatican City,
Rome. Comissioned by
the French Cardinal
Jean Villiers de La
Grolais for his tomb.



▮ Virgin with the Dead Christ
(*Röttgen Pietà*), from the
Rhineland, Germany, ca.
1300–1325. Painted wood, 2'
10 1/2" high. Rheinisches
Landemuseum, Bonn.









with Four Angels,

1510-15



PARMIGIANINO, *Madonna with the Long Neck*, from the Baiardi Chapel, Santa Maria dei Servi, Parma, Italy, 1534–1540. Oil on wood, 7' 1" x 4' 4". Galleria degli Uffizi, Florence.

Commissioned by Elena Tagliaferri to be placed in the funerary chapel of her husband Francesco.



□ MICHELANGELO
BUONARROTI, *Pieta*,
ca. 1498-1500. Marble,
5' 8 ½" high. Saint
Peter's, Vatican City,
Rome. Commissioned
by the French Cardinal
Jean Villiers de La
Grolais for his tomb.







Edo peoples, Court of Benin (Nigeria),
Plaque with Warrior and Attendants,

